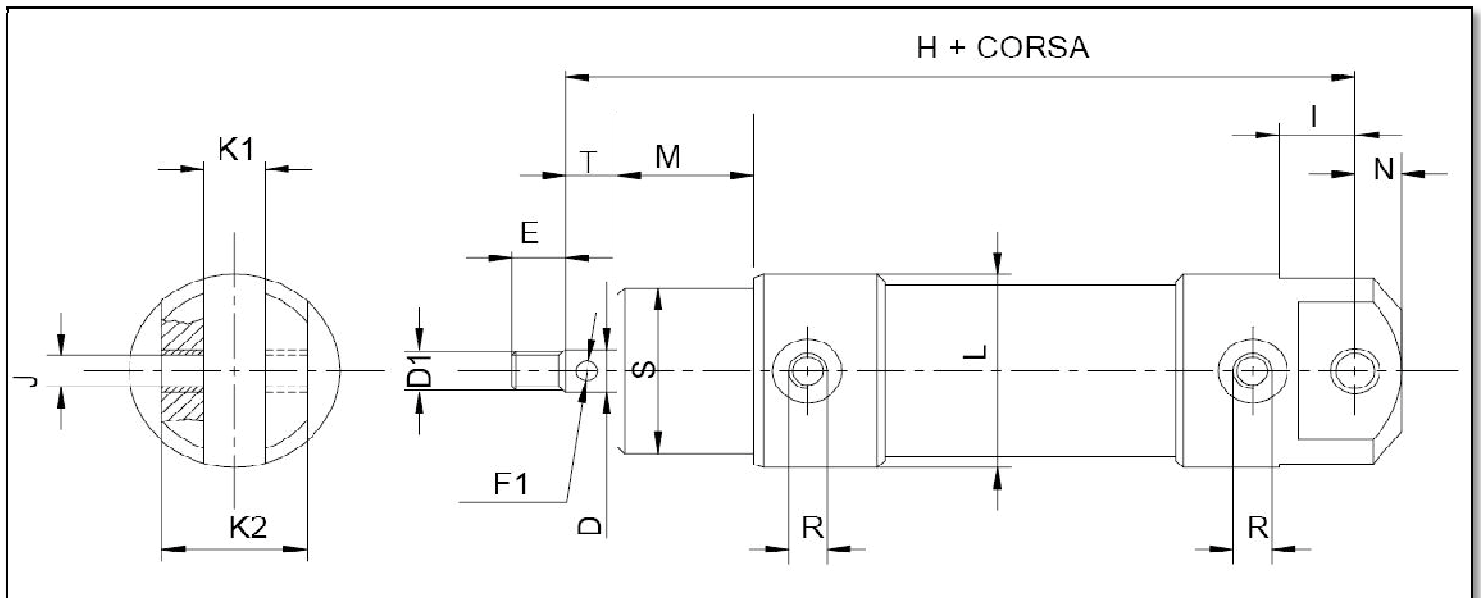




Cilindri pneumatici serie H

Tipo DC - SC



Ø mm	D mm	D1	E mm	F1 mm	H mm	K1 mm	K2 mm	I mm	ØJ mm	ØL mm	M mm	N mm	R	ØS mm	T mm
20	8	M6X1	9	3	85	8	22	10	5	30	16	6	1/8"	24	8
27	10	M8X1,25	12	4	96	9	25	21	6	35	20	7	1/8"	28	10
35	12	M10X1,5	15	4	106	12	32	23	8	45	24	9	1/8"	32	12
40	12	M10X1,5	15	4	121	18	40	26	10	50	32	10	1/8"	36	12
50	14	M12X1,75	18	5	130	25	49	28	12	61	32	12	1/8"	45	14
58	16	M14X2	21	5	140	26	54	33	14	70	32	14	1/4"	45	16
70	18	M16X2	24	5	151	35	67	35	16	82	35	16	1/4"	50	18
85	20	M18X2,5	27	6	168	40	76	36	18	98	44,5	18	1/4"	60	20
100	24	M20X2,5	30	6	191	40	80	45	20	114	50	20	1/4"	70	24